

HYDRAULIC CYLINDERS REPAIR OPTIONS

FOR MINING MACHINES



www.barloworld-equipment.com

LET'S DO THE WORK.™

© 2022 Caterpillar. All rights reserved. CAT, CATERPILLAR, their respective logos, "Caterpillar Yellow", the "Power Edge" trade dress as well as corporate and product identity used herein, are trademarks of Caterpillar and may not be used without permission.



**Barloworld
Equipment**



HYDRAULICS CYLINDERS REPAIR OPTIONS

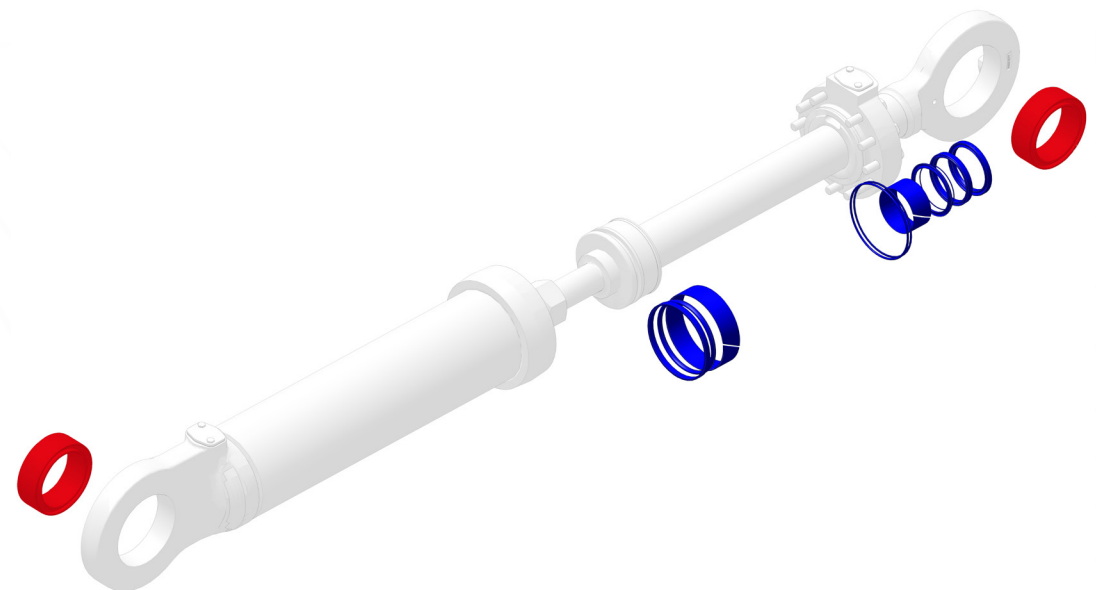
INTRODUCTION

Barloworld Equipment offers you repair options on selected machines. With solutions that are fast and convenient, we can make sure your hydraulic cylinders performs at their best. We also strictly adhere to caterpillar's reuse and salvage guidelines so you can be rest-assured that your equipment will perform at its peak. That's why repairing before failure is so critical. We have complete workshop capabilities in house.

CONTACT

Product Manager (Hydraulics) - RI
Prince Ndhlovu - pndhlovu@bw-eq.com

Marketing - marketing2@barloworld-equipment.com



LET'S DO THE WORK.™

© 2022 Caterpillar. All rights reserved. CAT, CATERPILLAR, their respective logos, "Caterpillar Yellow", the "Power Edge" trade dress as well as corporate and product identity used herein, are trademarks of Caterpillar and may not be used without permission.



**Barloworld
Equipment**



HYDRAULICS CYLINDERS REPAIR OPTIONS

Nothing has a bigger effect on machine performance than your hydraulic system. When it comes to Cat® Machines, your hydraulic system is only as good as its weakest component - which is why you should **ALWAYS USE GENUINE CAT® PARTS AND SERVICE.** If you compromise your system with **NON CAT®** Components, you could be opening it up to problems like decreased performance, lower productivity or contamination.

INDEX

- **OFF HIGHWAY TRUCKS**

- [777D OFF HIGHWAY TRUCK](#)

- [777E OFF HIGHWAY TRUCK](#)

- [785D OFF HIGHWAY TRUCK](#)

- [789C OFF HIGHWAY TRUCK](#)

- [789D OFF HIGHWAY TRUCK](#)

- [793D OFF HIGHWAY TRUCK](#)



- **TRACKTYPE TRACTORS**

- [D10T TRACKTYPE TRACTORS](#)

- [D10T2 - D11T TRACKTYPE TRACTORS](#)



- **WHEEL LOADERS**

- [992G WHEEL LOADER](#)

- [992K WHEEL LOADER](#)

- [993K LARGE WHEEL LOADER](#)



LET'S DO THE WORK.™

© 2022 Caterpillar. All rights reserved. CAT, CATERPILLAR, their respective logos, "Caterpillar Yellow", the "Power Edge" trade dress as well as corporate and product identity used herein, are trademarks of Caterpillar and may not be used without permission.



**Barloworld
Equipment**

CAT®

HYDRAULICS CYLINDERS REPAIR OPTIONS

5 REASONS TO CHOOSE CAT®

1. UNRIVALED EXPERTISE.

No one has the experience and knowledge of Cat equipment like we do.

2. GENUINE CAT® PARTS.

With patented designs and materials, they are the best parts for your machine.

3. INSPECTION PROCESS.

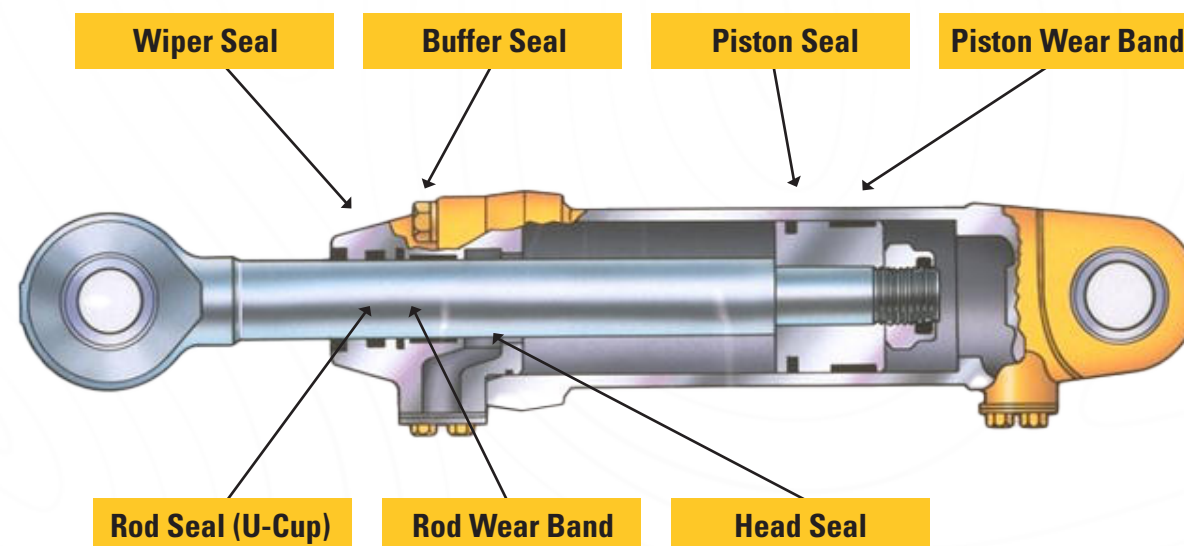
As a Cat® dealer, we have one of the most meticulous inspection processes in the industry.

4. VALUE DESIGNED INTO EVERY PART.

We have proprietary pump designs and control settings, as well as induction-hardened rods.

5. NOT FOR JUST CAT® MACHINES.

We can provide repair options across a wide range of equipment



LET'S DO THE WORK.™

© 2022 Caterpillar. All rights reserved. CAT, CATERPILLAR, their respective logos, "Caterpillar Yellow", the "Power Edge" trade dress as well as corporate and product identity used herein, are trademarks of Caterpillar and may not be used without permission.



**Barloworld
Equipment**



HYDRAULICS CYLINDERS REPAIR OPTIONS

Terms and conditions:

- Transportation / travel time / mileage not included on all levels and options
- All prices are excluding VAT
- Oil sample to be taken at 50 hours
- Re-man pricing is based on full core credit
- Removal and installation costs not included
- All prices are fixed for a specific marketing period and are subject to change
- Cylinders Repair Options complete with a 1 year -1000 hours warranty

Job Specific Options Available:

Refer to the Cylinder Repair Options Framework



OVERVIEW

CYLINDER REPAIR OPTIONS FRAMEWORK							
REPAIR OPTIONS	RESEAL		REPAIR		DEALER EXCHANGE	REMAN	NEW
	LEVEL 1	LEVEL 2	LEVEL 3		LEVEL 4	LEVEL 5	LEVEL 6
	RESEAL BASIC	RESEAL PREMIER	ROD REPAIR	TUBE REPAIR	COMPLETE CYLINDER GROUP	COMPLETE CYLINDER GROUP	COMPLETE CYLINDER GROUP
Disassembly & Inspection Report	●	●	●	●	—	—	—
Cylinder Wash	●	●	●	●	—	—	—
Genuine Cat Seals/Seal Kit	●	●	●	●	—	—	—
Light Hone				●	—	—	—
Genuine Cat Bearings/Bushes		●	●	●	—	—	—
Hydraulic Test				●	—	—	—
Cat Yellow/Black Paint	●	●		●	—	—	—
Ultrasounic Rod Test			●		—	—	—
Replace Rod (New/Reman/Salvage)			○		—	—	—
Repair Rod (Straighten/Polish/Re-Chrome/AST)			○		—	—	—
Replace Piston					—	—	—
Hard Hone Tube					—	—	—
Replace Tube (New/Reman/Salvage)					—	—	—
Outer Housing Repairs					—	—	—
Replace Head/Gland				○	—	—	—
Replace Bolts/Nuts/Washers			○	○	—	—	—
Complete Cylinder					●	●	●
● - Recommended ○ - Optional (if repair is available)	All repair work carried out according to Cat Salvage & Re-use Guidelines						

LET’S DO THE WORK.™

© 2022 Caterpillar. All rights reserved. CAT, CATERPILLAR, their respective logos, “Caterpillar Yellow”, the “Power Edge” trade dress as well as corporate and product identity used herein, are trademarks of Caterpillar and may not be used without permission.



Barloworld
Equipment

